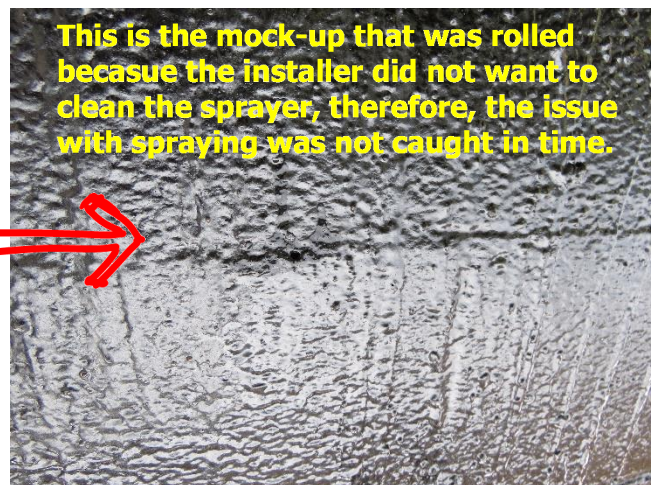
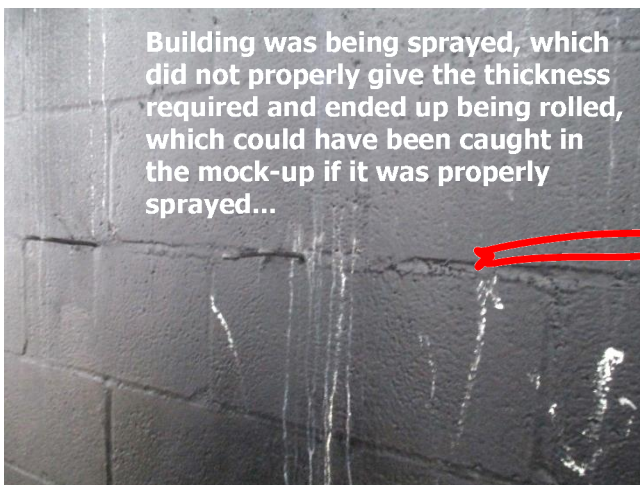
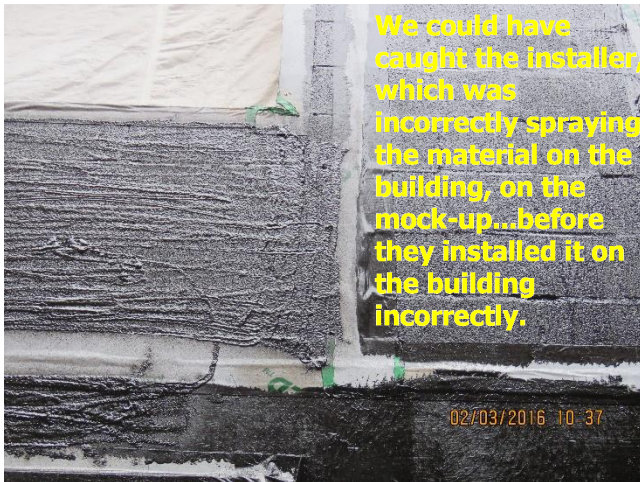




Mock-ups in general should be used not only for the Architect's or Owner's final review, but a verification of the construction coordination and installation processes to confirm Construction Documents.

In order to confirm proper coordination of an installation, we must install products as we are going to be installing the product on the building. So, if we are spraying the AVB on the wall, we must do the same procedure on the mock-up.



We have several projects where we rolled on the AVB on the mock-up because the installer did not want to bring out the sprayer and we have had issues with the installation that could have been caught on the mock-up early.

Also, when installing windows, try and use the same profile to confirm installation...this is important due to the many different types of profiles and materials that can be used for the window systems.